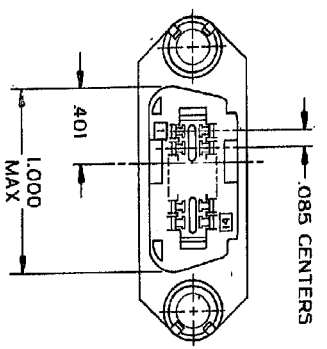
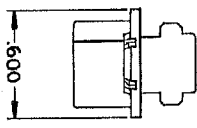
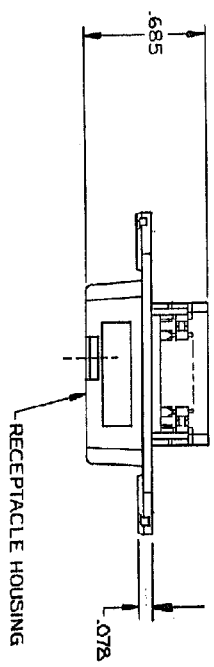
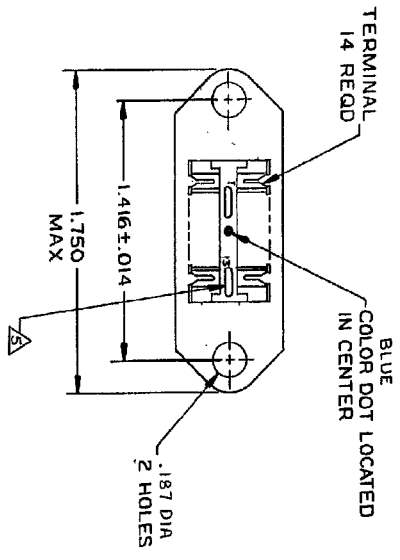


REV	DATE	DESCRIPTION	BY	CHKD	DATE
00					
K		REVISED FOR ESD-DR-000523			20/NOV/04
			ZR	WM	



1. THE CONTACT SURFACES OF THE TERMINALS ARE COATED WITH LUBRICANT.
 2. ALL DIMENSIONS SHOWN ARE FOR REFERENCE ONLY UNLESS OTHERWISE SPECIFIED.
- MATERIAL:
 HOUSING - THERMOPLASTIC (BLACK)
 TERMINALS: - HIGH STRENGTH COPPER ALLOY PLATED WITH .000030 MIN GOLD OR GOLD FLASH OVER .000030 MIN PALLADIUM NICKEL ON CONTACT MATING SURFACE. .000050 MIN NICKEL UNDERPLATE OVER ENTIRE TERMINAL.
4. WIRE SIZE: 24 & 26 AWG SOLID & 24 AWG 7 STRANDS OF COPPER CONDUCTORS. MAX INSULATION DIAMETER OF .045 IS ACCEPTABLE FOR MOST APPLICATIONS.
- △ CORING MAY OR MAY NOT APPEAR AND IS AT THE DISCRETION OF TYCO ELECTRONICS.

DIMENSIONS		TOLERANCES		FINISHES	
0	AS	0	AS	0	AS
1	AS	1	AS	1	AS
2	AS	2	AS	2	AS
3	AS	3	AS	3	AS
4	AS	4	AS	4	AS
5	AS	5	AS	5	AS
6	AS	6	AS	6	AS
7	AS	7	AS	7	AS
8	AS	8	AS	8	AS
9	AS	9	AS	9	AS
10	AS	10	AS	10	AS

THIS DRAWING IS A CONTROLLED DOCUMENT.

REV A HOLT 1-1-98
 V. STALL 1-1-98
 ZPO S. WARD 1-1-98

ASSY, RCPT, 14 POSN, B SLOT
 CHAMP-LOK, W/ .187 DIA HOLES

TYCO Electronics Corporation
 Harrisburg, PA 17105-5088

THIN FLANGE 2-552271-1
 DESCRIPTION PART NO

DATE CODE DRAWING NO
 A2100779 ©=552271

SCALE NTS SHEET 1 OF 1 REV K

RESTRICTED TO

552271

AMP 1-11-98 REV 31000000